

RADIO Reporter Pro - Manual

Contents

About program	3
Menu	4
File menu	4
Tools menu	4
About menu	4
Panels	5
Archive	5
Reports	6
Windows	7
Archive settings	7
Report wizard	8
Profile manager	8
Settings	10
Program	10
Debug	10
View	11
Autoload	11
Configuration	12
Information	14
File types	14
License	15
Contact Information	16

About program

User's guide for RADIO Reporter Pro v.1

RADIO Reporter Pro - a report generator for radio stations. The software is designed to create reports based on playback history from RADIO Player Pro, playlists from RADIO AdsMan Pro, or file directories. It generates reports in list or statistics format with HTML export capability.

Features

- **Archive loading** - load playback history from RADIO Player Pro, playlists from RADIO AdsMan Pro, or file directories
- **List report** - detailed list of played files with start time, duration, and type
- **Statistics report** - summary statistics of files with play count and total duration
- **HTML export** - save reports in HTML format for viewing and printing
- **File type filtering** - music, ads, jingles, news, programs, and other types
- **Content filtering** - include and exclude files by path matching
- **Customizable period** - report period selection: day, week, month, year, or custom range
- **Profiles** - multiple profiles for working with different settings
- **Autoload** - automatic data loading at program startup
- **Built-in player** - listen to files from the archive list

Menu

File menu

Start profile manager

Start [profile manager](#).

Exit

Exit the program.

Tools menu

Settings

Opens the [application settings](#) window.

About menu

Home web page

Opens the home [page](#) online.

Technical support web page

Opens the [support page](#) on the Internet.

E-mail support

Use this item to receive help by e-mail.

Check for updates

If you have access to the Internet, the program will inform you if there is a newer version on the official website.

Changes list

The window of the list of major changes in the program by version.

About program

Displays a window with information about the version of the program.


Panels


Archive


The "Archive" tab is the main working area of the program. It displays the list of loaded files from the playback archive.

Archive settings

The left side of the panel contains a list of archive settings. Each setting contains parameters for loading data from a specific source.

 **Add archive settings**
Create new [archive settings](#).

 **Copy archive settings**
Create a copy of the selected archive settings.

 **Delete archive settings**
Delete the selected archive settings.

Edit archive settings
Opens the [archive settings](#) window for editing.

Load archive
Load data from the archive according to the selected settings.

File list

The right side of the panel displays a list of loaded files with columns: number, title, type, duration, start time, stop time, folder.

Delete from list
Remove selected files from the list.

File properties
View properties of the selected file.

Export to HTML
Export the current file list in HTML format.

Play
Play the selected file in the built-in player.

Quick search

The search field at the bottom of the panel allows you to quickly find a file in the list by name.

Status bar

The bottom of the panel displays information: count and duration of all files, count and duration of selected files.

Reports

The "Reports" tab is designed for generating and exporting reports based on the loaded archive data.

Report types

- **List** - detailed list of played files in chronological order
- **Statistics** - summary statistics of files with play count and total duration

Export options

Show after export

Automatically open the HTML report in the browser after saving.

Show summary statistics

Display summary statistics in the report.

Split into playlists

Split the report into separate playlists.

Report wizard

When exporting a report, the [Report Wizard](#) opens to specify additional parameters: report title, counter, and grouping by file types.

Windows

Archive settings

This window is designed to configure the parameters for loading data from the archive.

Report period

Start date

The start date of the loading period.

Stop date

The end date of the loading period.

Quick period selection using buttons:

- **Day** - current day
- **Week** - current week
- **Month** - current month
- **Year** - current year

Arrow buttons allow navigation to the previous/next period.

Time

Filter by start and stop time of playback.

Report type

- **List** - detailed chronological file list
- **Statistics** - summary file statistics

Use location of the file directory

When generating statistics, use the full file path instead of just the file name.

File types

Filter loaded data by file types:

- Music**
- Advertisement**
- Jingles**
- News**
- Programs**
- Files**

Archive location

Specifies the path to the directory containing the playback archive files.

Report settings

Load inactive playlists

Load data from inactive playlists.

Windows

Split to blocks

Split data into blocks when loading from the archive.

Filters

Include files which contain in path

Load only files whose path contains the specified strings. One match per line.

Exclude files which contain in path

Exclude files whose path contains the specified strings. One match per line.

Report wizard

The Report Wizard opens when exporting a report in HTML format and allows you to specify additional parameters.

Report title

Abc Title

The report title that will be displayed in the HTML document header.

Report counter

5 Number

The current report number for generating numbered reports.

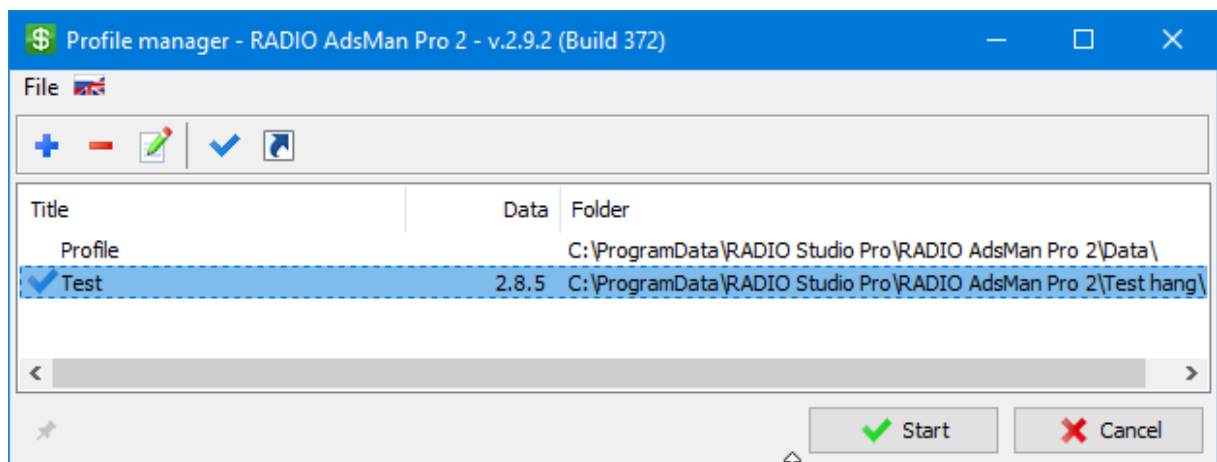
Increase value when report is created

Each time the report is generated, the number will automatically increase.

Group by file types

Group files in the report by their types (music, ads, jingles, etc.).

Profile manager



The Profile Manager is designed to create multiple profiles that allow you to run the program with a certain set of predefined parameters.

Each profile stores its data in the directory specified for the profile.
Start the profile manager is possible through the Start menu - All Programs - RADIO Studio Pro - RADIO Player Pro - Profile Manager.



Create new profile

Create a new profile.

The profile created with the "Default" parameter is used when the program is started without specifying the profile directory.



Delete profile

Delete the profile directory.



Edit profile

Change the name and directory of the profile.



Use as default profile

Run the program with the selected main profile.



Create desktop link to start selected profile

Create a shortcut for the selected profile on the desktop.

It allows a number of shortcuts to start the program with the appropriate profile.

You can start the program with a certain profile manually with the parameter/Data = Profile_Profile.

Example: *AdsMan.exe "/ Data = D:\Profile_Folder *

Start

Run the program with the selected profile.

Cancel

Closing the profile manager.

Settings

RADIO Reporter Pro settings window. Available via Tools menu - Settings.

Settings are divided into the following sections:

- [Program](#) - general program settings
- [View](#) - display and time accuracy settings
- [Autoload](#) - automatic data loading at startup
- [Configuration](#) - data backup
- [Debug](#) - debug mode

Program

Change program title

Allows you to change the program window title text.

General

Confirm data delete

Display a confirmation dialog before deleting data.

Automatically check for updates

Automatically check for new versions at program startup.

Connecting to the music database

Fill file information from RADIO Base Pro

Load additional file information from the RADIO Base Pro database.

Search file information by full file path only

Search for information using the full path, not just the file name.

MySQL settings

Configure the MySQL server connection for RADIO Base Pro database.

Debug

The debugging mode is designed to obtain additional information on an error that has occurred for sending to the developer.

It is not recommended to enable debugging in normal operation mode.

If an error occurs, the program will offer to enable debugging in settings and an additional option if necessary.

Enable debugging

On/Off display of debugging information in error windows.

Debug timers

Enabling debugging for timer procedures

Debug threads

Settings

Enabling debugging for procedures running on threads

Restore debugging options on application restart

If the parameter is disabled, then after restarting the program the debugging mode will be turned off

Command line options

Three options are supported for launching an application with debugging enabled.

/Debug - Enable debugging

/DebugTimers - Enable debug timers.

/DebugThreads - Enable thread debugging.

Example: Application.exe /Debug

View

Time accuracy

View

Accuracy of time values display in lists and tables.

Edit

Accuracy of time values in editing fields.

General

Calculate on air time using start time of the next file

When enabled, the actual file duration is calculated as the difference between the start time of the current and next files.

File tags

Update file parameters from disk

Update file parameters (time, bitrate, etc.) from files on disk.

Refresh tag data directly from files

Update tag data (ID3, APE) from files on disk.

Download waveform from logs

Load waveform data from player log files.

Preserve file creation time when saving tags

Preserve the original file creation date when modifying tags.

HTML export parameters

Show HTML reports after save

Automatically open the HTML report in the browser after export.

Autoload

Autoload data at startup

Settings

Configure automatic data loading from the archive at program startup.

Change period

When enabled, the loading period will be automatically updated to the current date at program startup.

Configuration

Backup archive folder

Specifies the location of the directory to store zip data archives.

Options

Autosave configuration archive on exit

On/Off autosave the archive when exiting the program.

The archive is not saved if there were errors during the program loading.

Automatically backup on time

Enable/Disable autosave of the archive at the specified time, after the selected time interval.

The archive will be created only when the program is on, if the specified time has come.

00:05:00



Backup time

Time of the archive creation.

5



Interval in days

The interval in days, through which a new copy of the archive will be created.

Use limited number of archives

When the option is enabled, the program will automatically delete older archives when creating new ones.

5



Maximum count

The maximum number of archive files upon which the program will begin to delete older archives.

No more than one archive per day

When the option is enabled, the program will delete the old archives on the same date when creating new ones.

Data

Settings

Data from the Directories and options of the Settings window.

Timetables

All schedules created in the program.

Cards

Roller cards. Base and Archive.

Reports

The generated reports.

MiniBase

Sections of the minibase.

Actions

Save to archive

The procedure for saving to zip the archive of the selected data.

Restore from archive

The procedure for restoring the previously saved data from the zip archive. Only the selected ones will be restored, regardless of the availability of data in the archive.

Resetting data

The procedure for resetting the selected data to the default state.

Information

File types

Types

File and playlist types:

1. File
2. **Musical**
3. **Program**
4. **Advertising**
5. **News**
6. **Jingle**
7. **Relaying** (Playlists only)

Priority

Priority means the ability of the playlist to interrupt the currently playing playlist.

If the playing playlist has priority lower than the started playlist, the playing playlist will be interrupted and a new playlist will be launched, if on the contrary, the playlist to be launched will be added to the current queue below the current playlist according to its priority.

Each type has its own priority:

- Relaying is the lowest;
- File - below low;
- Musical - low;
- Software - medium;
- Advertising - high;
- News - the highest;
- Jingles - the top.

License

RADIO Reporter Pro is a free software (Freeware) and can be used without any restrictions.

Contact Information

E-mail:

Technical support:

support@radiosoft.pro

Licensing Department

license@radiosoft.pro

Homepage:

<https://radiosoft.pro>

