

RADIO Base Pro Manual

Contents

About program	3
About RADIO Base Pro	3
Working with the program	4
Initial setting	4
Installing MySQL	4
Menu	9
File menu	9
Search Menu	9
Tools menu	9
Help menu	9
About the program menu	9
Panels	11
Base	11
Tables	14
Windows	15
Login to the program window	15
File property	16
File property	17
Information	18
Stream info	0
Play	19
The "File Search" window	23
Profile manager	24
Settings	26
Program	26
Debug	27
Play	27
Users	28
Configuration	28
Import configuration	29
Registration of the program	30
Registration of the program	30
Contact Information	31

About program

User Guide for RADIO Base Pro. v. 3

About RADIO Base Pro

RADIO Base Pro - A program designed to organize and maintain a database of music files.

It has the following functions:

- create a database (DB) from music files located on the computer where the program is running;
- open the database on the remote machine;
- provide multi-user data access mode;
- organize a tree structure sections for storing files;
- add both separate files and folders with extracting information from the tags of music files;
- edit the properties of files in the database, as well as tags of music files;
- edit file groups;
- play audio file formats that are supported by the installed DirectX codecs in the system;
- search files in the database according to specified parameters;
- create and save search templates for later use;
- create backup copies of the database and restore the base from them;
- add files to the database by dragging from other programs, as well as drag and drop files into other programs of the RADIO Studio Pro complex;

Working with the program

Initial setting

ATTENTION!!!

The RADIO Base Pro program requires MySQL server version 5.x or higher installed.

You can use a pre-installed server or install a new one.

You can download the installation program for the MySQL server on the manufacturer's website.

<http://www.mysql.com/>.

Additionally, a link to the MySQL server installer is on the RADIO Studio Pro website. <https://radiosoft.pro> in the download section of the RADIO Base Pro.

MySQL installation information you can read [here](#)

First start

Below are described the initial steps for setting up the RADIO Base Pro program.

1. Launch the RADIO Base Pro program.
2. Enter the parameters for connecting to the MySQL server. ["Login to program"](#)
3. Create a new database in the window. ["Login to program"](#).

A user will be created in the database with the name "admin", an empty password and with administrator rights.

A user with administrator rights has full access to the database, has the right to create and delete other users.

It is recommended that after entering the program, change the password of the user "admin" if access control is required.

4. The created database must be selected in the list of databases and click on the "Login" button.
5. After starting the program, if necessary, create users for the database using [Tools menu](#) - Settings.

Installing MySQL

Install MySQL server.

You can download the installation program for the MySQL server on the manufacturer's website.

<http://www.mysql.com/>.

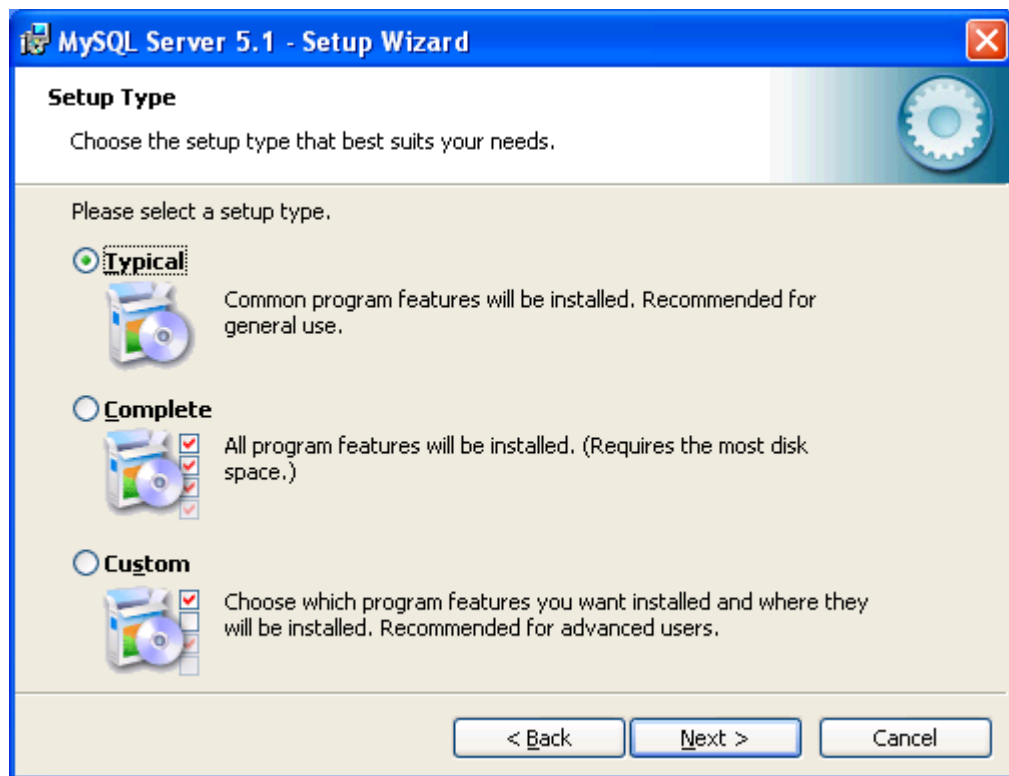
Additionally, a link to the MySQL server version 5.1 installer is on the RADIO Studio Pro website.

<https://radiosoft.pro> in the download section of the RADIO Base Pro.

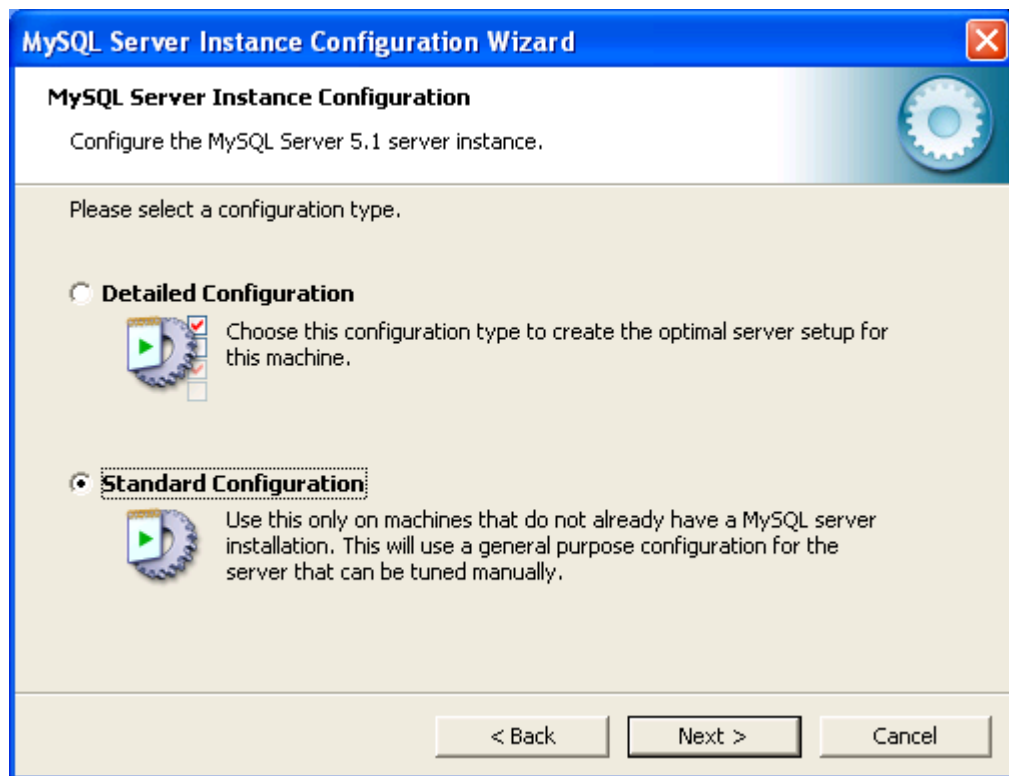
Installation order for version 5.1

Download the distribution and run the installer.

Select the type of installation Typical.



Configure the installed server.

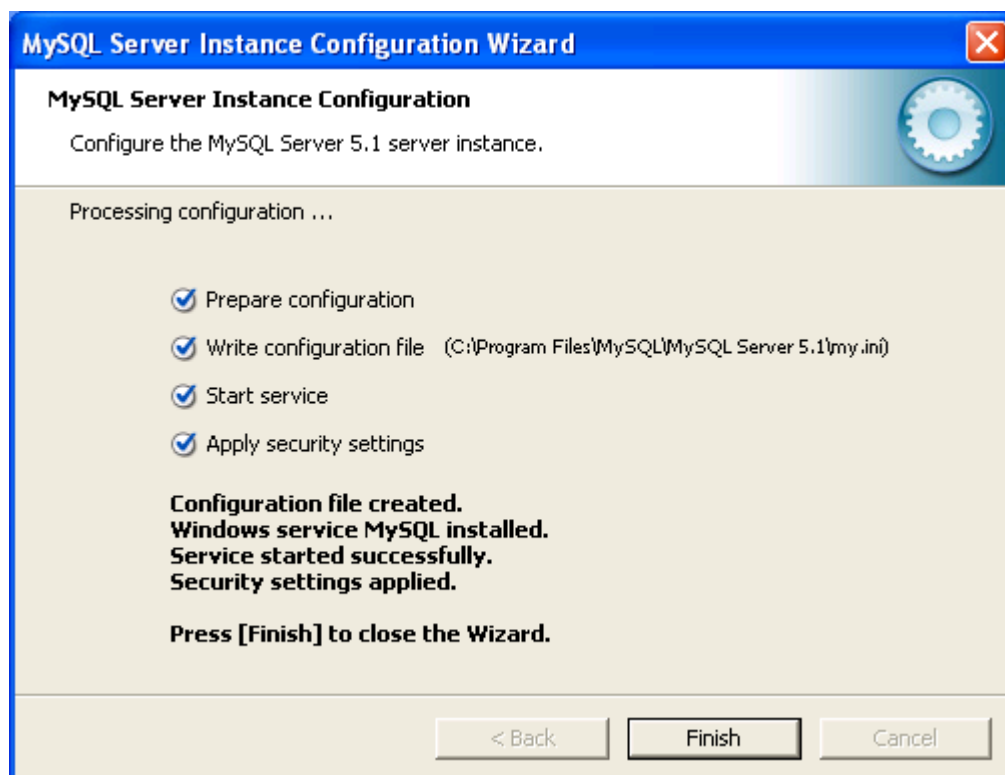




ATTENTION!!!

Remember this password.

If the installation is successful, you will see this window.



Menu

File menu

Start profile manager

Start [Profile Manager](#).

Logout and change user

The program will exit and a login window will be shown, where you can select a new user or database.

Exit

Program exit

Search Menu

Expended search

Will open [file search window](#) by parameters.

You can use this search method if you need to find files by several parameters.

For example: Find all songs by artist for at least 3 minutes.

Simple parameter search

You can search for files by one of the parameters:

Tools menu

Settings (F9)

Opens the program settings window

Help menu

Contents

Launch of the RADIO Base Pro help system.

Startup settings

Help section [Startup settings](#).

About the program menu

Homepage

Opens home [the page](#) online the Internet.

Support page

Opens up [the page](#) support online.

Send -Email

Use this item for email assistance.

Activation request

Shows a window with form of registration questionnaire required for registration of the program.

Load activation key

Use this item if you want to download the registration key.

License information

Shows a window with license data.

What's new

Window list of major changes in the program version.

Check for updates

If you have access to the Internet, the program will let you know if there is a newer version on the official website.

Version

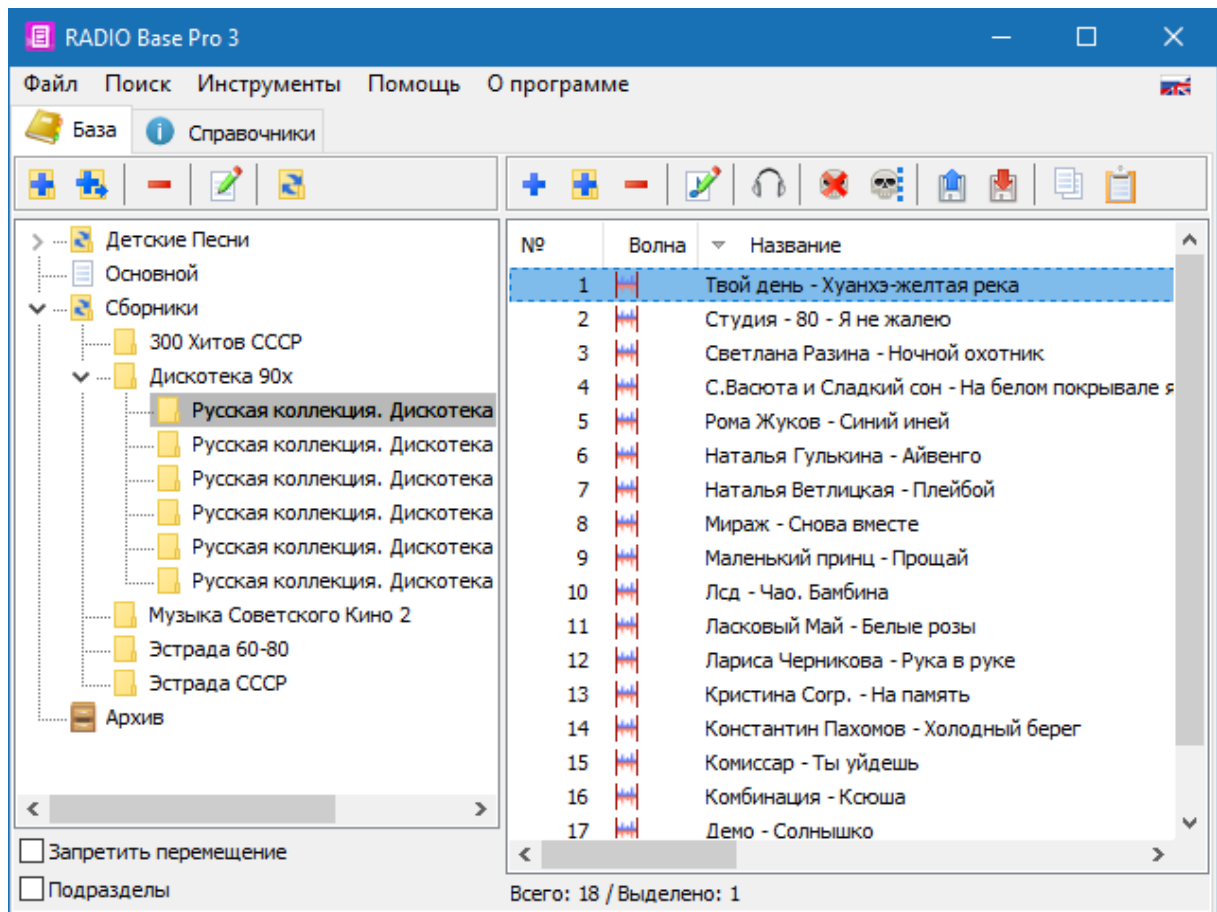
Shows a window with information about the purchased license and information about the version of the program.

Panels

Base

The "Base" panel is designed for viewing, adding, editing, etc.

The panel contains a section tree, a list of files and a control panel with buttons for performing operations on files.



Partition Tree

All files in the database are stored in sections that form a tree structure.

Operations with sections can be performed using the buttons at the top of the section tree, or through the right-click menu.



Add section

Adding a new section at the same level



Add subsection

Adding a new subsection for the selected section.



Delete section

Delete the selected section.



Edit section

Section name change.

☒ **Disable moving**

Prevent moving partitions with the mouse.

If the option is not enabled, then you can change the structure of the sections by moving the sections with the mouse.

A warning will be displayed to confirm the move.

☒ **Child partitions**

When this option is selected, the files that are located in the selected section and in subsections of the selected section are included in the file list.

File list

The list is designed to display, add, delete and edit file properties.

File operations can be performed using the buttons at the top of the file list, or through the right-click menu.



Add file from disk

Add selected files to the database from the hard disk.

The program will automatically download information from the tags of the added files.

When adding, you can specify options for adding files.

☒ **Create subsections for each folder**

When selecting the option, the program will automatically create a partition structure corresponding to the subfolder structure for the folder being added.



Add directory from disk

Add files to the database from the selected hard disk directory.

When adding, you can specify options for loading file data from disk.

☒ **File information (size, duration ...)**

Read file parameters

☒ **Info**

Reading information from a file tag.

☒ **Fade settings from the tag**

Reading personal fade information from a file tag.

☒ **WaveForm**

Load waveform from file.

☒ **Start and end of file by silence**

Determining the beginning and end of the sound file using the silence detector.

☒ **Move existing duplicates**

If you select the option, the program will move duplicate files (based on the file name on the disk) to the current partition.

Replace previously loaded data

If you select the option, the program will overwrite all the data in the database on downloaded from the file

Delete files

Deleting files from the database.

When deleting, you can specify options for deleting files.

Files will be transferred from the current section and moved to the "Basket" section.

If the current list of files is in the "Trash" section, then the deletion will occur from the database, with the exception of files that cannot be deleted.

ATTENTION!!!

If the files were used by another program (for example, RADIO Rotator Pro), they cannot be deleted until the links to them are deleted from other programs (you can clear the history, playlists, etc.).

Such files will be located in the "Recycle Bin" section and can be deleted manually when they are no longer used.

Delete from disk

Be careful!!! If you select the option, the program will delete files not only from the database, but also from the disk.

Delete nonexistent files

Delete files from the database that can not be found on the disk.

The deletion restrictions are the same as for the "Delete Files" button.

Mark non-existent files

Delete files from the database that can not be found on the disk.

The deletion restrictions are the same as for the "Delete Files" button.

File property

Editing properties of a file or group of files. ["File Properties"](#) where you can edit the parameters and save them in the database.

Play file

Displays the file playback form.

Download information from disk

Update data from files located on the disk.

Save information to disk

Saving data from the database in files located on the disk.

Copy files to clipboard

Copies the selected files to the buffer for insertion from the buffer (for example, in RADIO Player Pro).

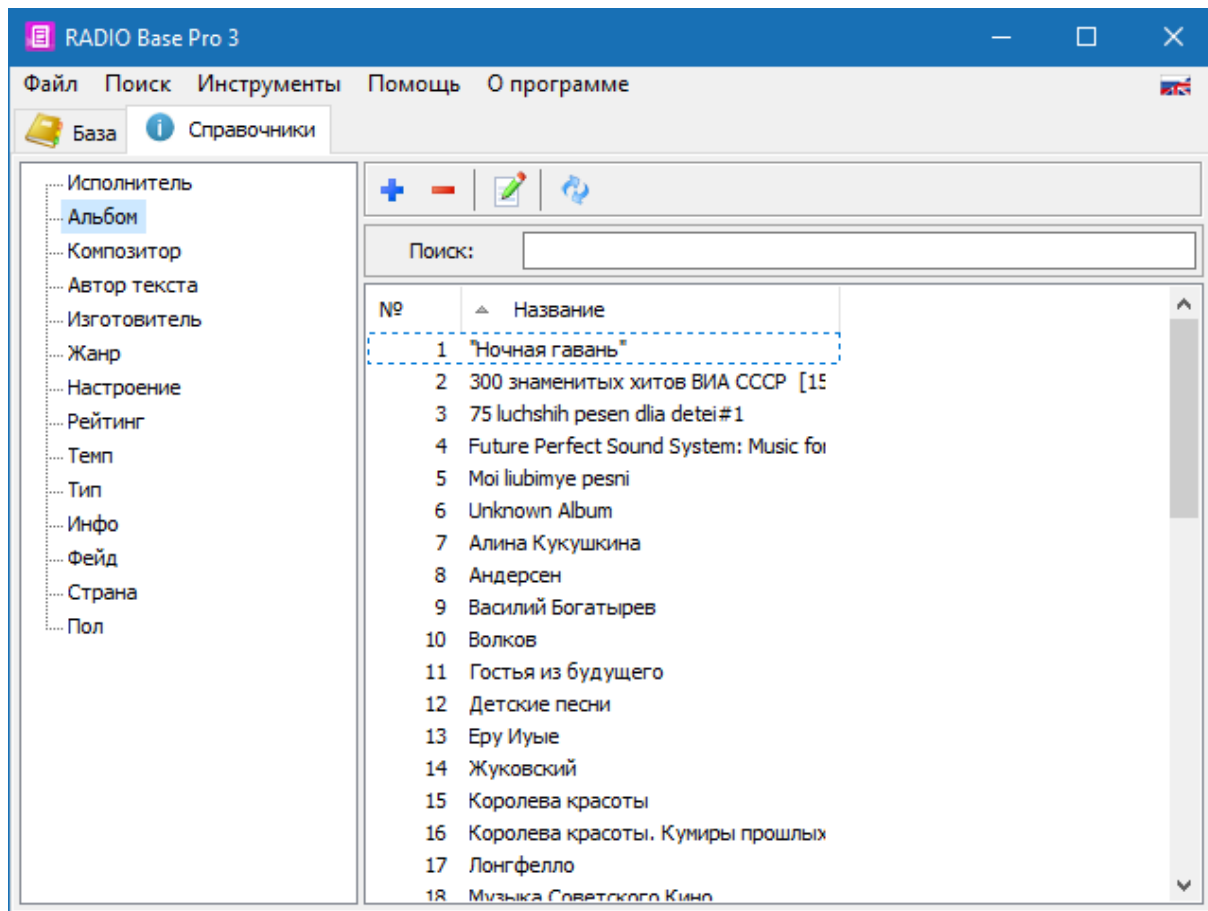
Paste files from clipboard

Adds files in the buffer to the database in the selected section.

Using this function, you can add files to the database by selecting them in RADIO Player Pro or Mini Base.

Tables

The "Directories" panel is intended for viewing, adding, editing properties of files such as artist, album, mood, fade, etc.



Add a note

Adding a parameter to the database.



Delete record

Delete selected parameters from the database.

Deletion is possible only if this parameter is not used in other directories or files.

To delete the used parameters, you can use the search by the name of the desired parameter and replace it in the properties of the found files.



Change record

Change parameter value.



Refresh list

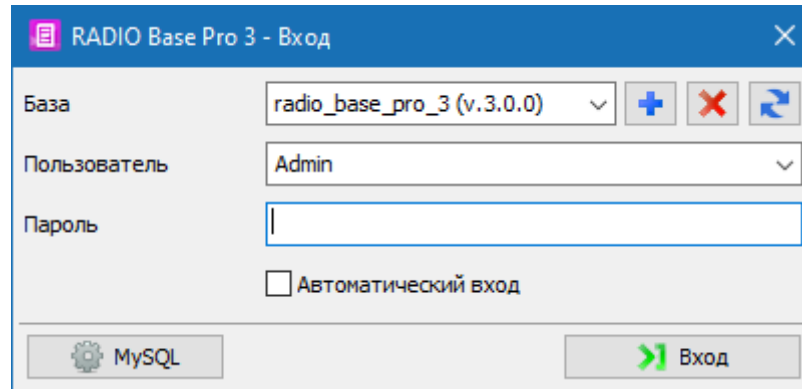
Updates the current list from the database.

It can be used in case of simultaneous connection to the base of several users, for uploading changes in the base.

Windows

Login to the program window

The login window is designed to configure the settings for connecting to the MySQL server, selecting the database and the current user.



Database

abc ▼

Base

Select the desired base.

abc ▼

User

Username RADIO Base Pro.

Not to be confused with the username MySQL.

Abc

Password

RADIO Base Pro user password.

Not to be confused with the password of the MySQL user.



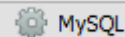
Login automatically

The program will remember the last parameters and will not display the input dialog the next time.

To display the dialog, use the menu item "File - Select Database"

MySQL Server

To configure the connection to the MySQL server, click



Abc

IP Address

MySQL server IP address.

For a local server, you can use "localhost" or "127.0.0.1"

Abc

Port

MySQL server port.

Default 3306

User


The username of the MySQL server.

Abc


Password

MySQL server user password.

Creating a base

- Connect to the MySQL server where you want to create a database
- Select a MySQL user with administrator rights and enter the MySQL password;
- Click the button ,
- In the "Base" field, enter the name of the database to be created, click Ok.

Remove base

- Connect to the MySQL server on which you want to create a database
- Select a MySQL user with administrator rights and enter the MySQL password;
- Select from the list the name of the database you want to delete;
- Click the button .

File property

Свойства файла - Юрий Антонов - Поверь в мечту (1985).mp3

Свойства файла | Информация | TAG Теги | Воспроизведение

Основные

Файл: F:\Music\MP3\Сборники\300 Хитов СССР\Юрий Антонов - Поверь в мечту (1985).mp3

Название: Юрий Антонов - Поверь в мечту (1985)

Метка диска:

Текстовый файл:

Номер трека: - +

Время: 00:04:25,953 - + ☐ Зафиксировать время

Файл

Размер: 10 659 618

Длительность: 04:25,953

Каналы: Объединенное стерео

Частота: 44100

Битрейт: 320 Kbit/s

Обновить

OK Отмена

Changing file properties allows you to change personal file settings.
For help, select a section:

- [File property](#) - the main properties of the file
- [Information](#) - additional file properties
- Common - information about the characteristics of the file
- [Play](#) - playback settings

File property

File property

 **File**

File name on disk

Title

The name displayed in the playlists in the program

Disc Label

Any text label media.


Text file

The name of the file containing the narration.

When you launch a music file in RADIO Player Pro, the narration is displayed in a separate window.

Track number

The track number of the song on the disc.

 **Time**

Duration of the file.

 **Refresh time**

The actual duration is determined directly from the file.

☒ **Fixed time**

During playback, the actual duration of the file is ignored.

Used to change the playing time.

When this option is enabled, the program will not automatically update the file time when updating file characteristics from a disk.

General characteristics.
To update, click "Update"

File size

The physical size of the file on the disk in bytes.

Duration

Real file duration

Channels

Information about the number of audio channels in the file.

Frequency

The sampling rate in Hz.

Bitrate

Data transfer rate (bit rate)

Information

Common

Song

The name of the composition.

The program when adding a new file is a composition from the combination "Artist - Song".

The user can subsequently replace any combination.

Artist

The name of the artist.

Year

The year of publishing

Album

Album name

Style

The name of the style (genre) of the composition

Mood

Mood.

It is characterized by the name of mood and numerical value.

Rate

Rating composition.

It is characterized by the name of the rating and the numerical value.

Temp

Tempo composition

Type

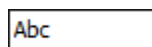
The name of any type of composition.

Composer

The name of the composer

Text author

The name of the author of the text



Info

The name of an arbitrary info field for a composition.

For example: Top hits, last entry, etc.

Work with tags



Download tag

Loading tag data from file



Save tag

Writing tag data to a file

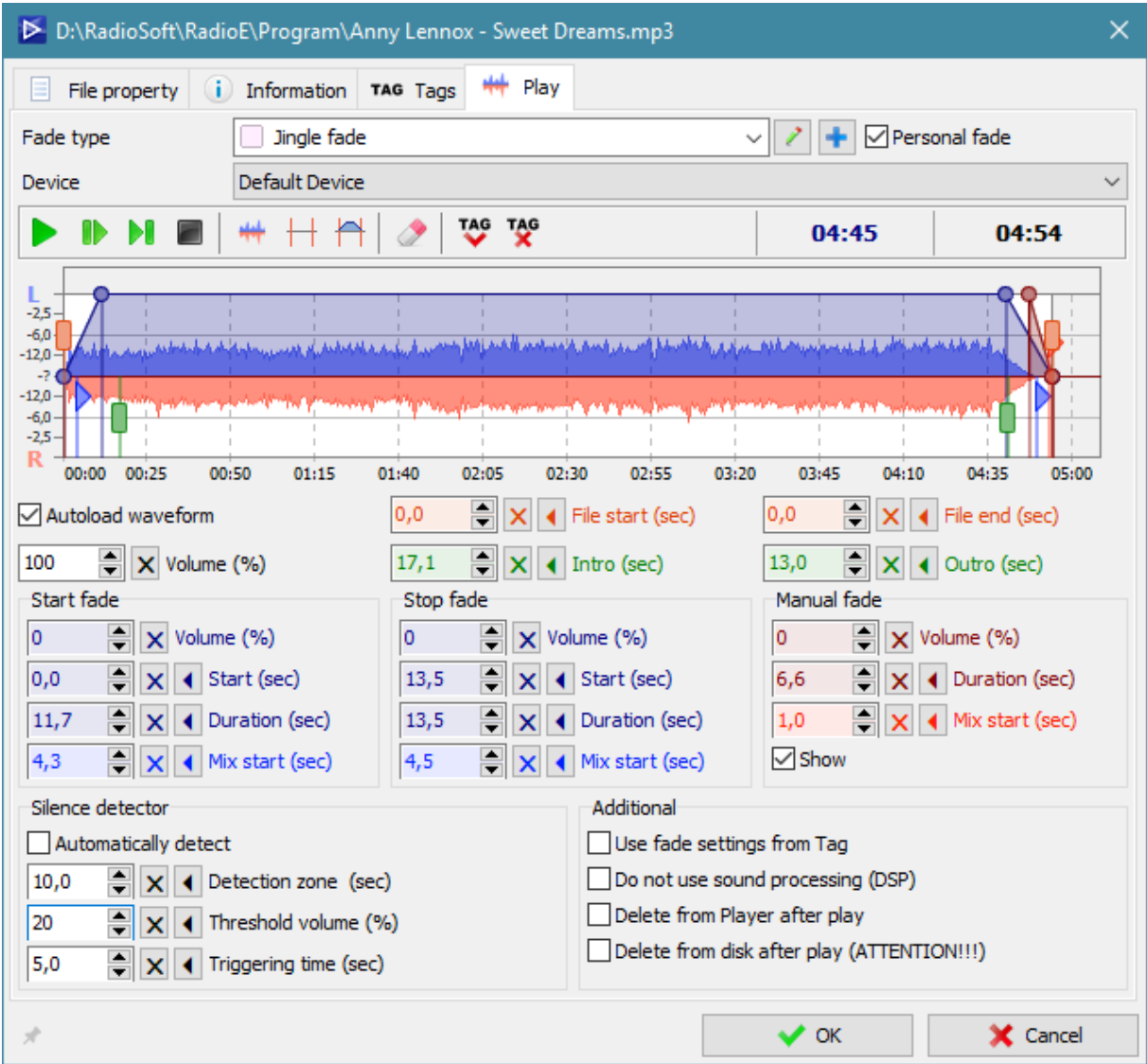


Remove from tag

Remove tag data from file

Play

Allows you to change the initial, final and forced fade and other settings.



Fade type
Select the type of fade to use.

Device
Selecting a playback device if you want to play the file on a separate device.

WaveForm

The waveform displays a volume diagram of the file being edited.

Mouse actions

Left button	Setting the label on the chart
Right button	Reset label position and stop playback
Double click	Start playing
Mouse wheel	Zoom in or out of the chart



Play from the beginning of the file.

Start playing from zero position.



Play from start fade

Start playback from the beginning of the file.



Play from end fade

Start playing for 1 second to mark the end of the file.



Stop

Stop playback.



Load waveform from file

Reload the wave diagram directly from the file.



Automatic selection of the beginning and end of the file

Automatic selection of the beginning and end of the file, using the current fade settings for the start/end detector in silence.



Automatic selection of the beginning and end of the file and recording in a personal fade

Automatic selection of the beginning and end of the file and setting the initial values for the fade.



Zero all settings

Selective clearing of fade parameters and loaded waveform.



Load from Tag

Loading fade from tag



Save to tag

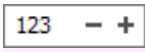
Write fade data to a file tag.



Remove from tag

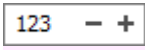
Remove fade data from file tag.

Common



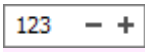
File start (sec)

Label the beginning of the file.



File end (sec)

Label the end of the file.



Intro (sec)

Time to start the words in the song.

- +

Outro (sec)

Time after the end of the words in the song.

Fade

 - +

Volume

The maximum volume of the file in%.

Start fade

Used when starting a file.

 - +

Volume (%) - the initial volume of the file at the start of the fade.

 - +

Start (sec) - start time of the fade in seconds from the beginning of the file.

 - +

Duration (s) - fade length in seconds (fade time).

 - +

Start of mix (s) - the start time of the next file in seconds to the end of the file.

Stop fade

Used when automatically stopping and flattening a file.

 - +

Volume (%) - The final volume of the file at the end of the fade.

 - +

Start (sec) - start time of the fade in seconds before the end of the file.

 - +

Duration (s) - length of fade in seconds (fade time).

 - +

Start of mix (s) - the start time of the next file in seconds to the end of the file.

Manual fade

It is used in the case of a file mix before it ends, or pressing the "Skip to the next file" button, etc.

 - +

Volume(%) - The final volume of the file at the end of the fade.

 - +

Duration (s) - length of fade in seconds (fade time = beginning of fade).

 - +

Start of mix (s) - the start time of the next file in seconds to the end of the fade.

Silence detector

☒ Automatically detect

On/Off automatic detection of the beginning and end of the file at startup

 - +

Detection zone (sec) - time from the beginning to the end of the file, where silence detection will be active.

 - +

Threshold volume (%) - % of the maximum level, below which the detector is considered to be triggered.

 - +

Triggering time (sec) - the time after which the start of the fade occurs from the moment of activation.

Additional

☒ Use fade settings from Tag

Activation of loading fade data from a file during playback.
This function works only with files containing tags (for example, MP3, OGG).

☒ **Do not use sound processing (DSP)**

Disables the use of DSP plug-ins for audio processing for this type of fade or specific file.

☒ **Delete from Player after play**

Enables the mode of deleting a file from the player after playback.

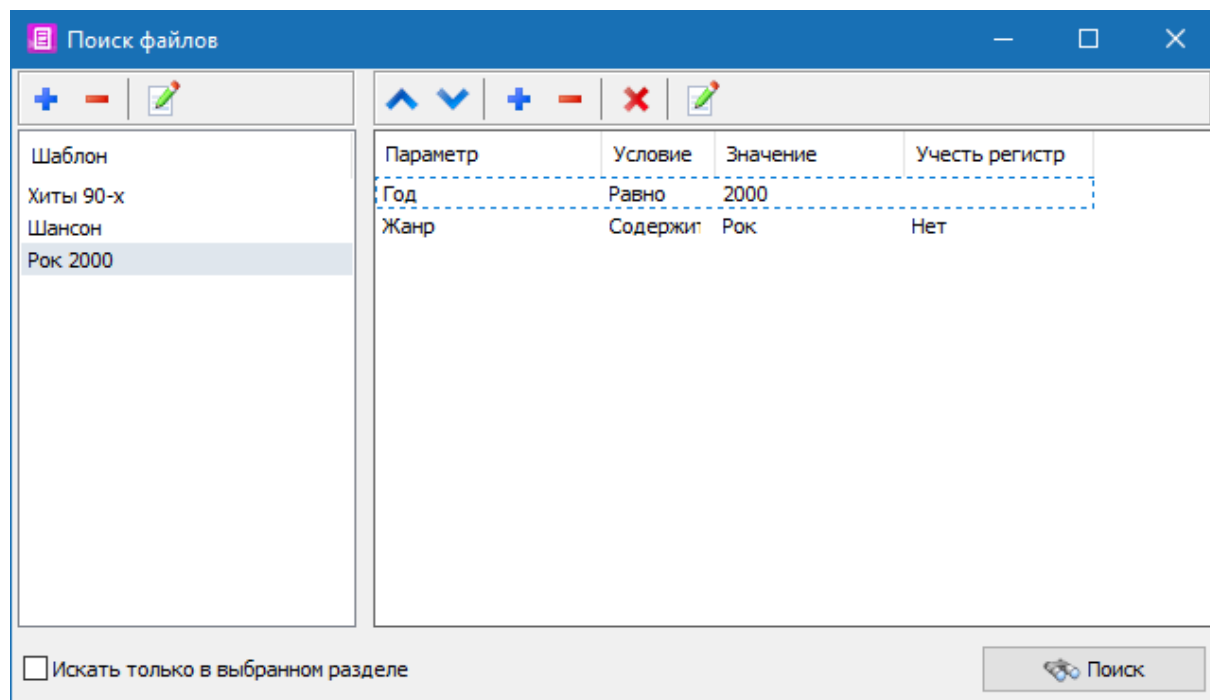
☒ **Delete from the disc after playback (ATTENTION !!!)**

Enables the mode of deleting a file of this type from a disc after playback.

ATTENTION !!! If you delete without using the recycle bin, you cannot restore the file without special programs !

The "File Search" window

The file search window is designed to create search patterns for specific parameters, as well as for a comprehensive database search.



Template toolbar



Add template

Adds a new template based on the current parameter list on the right.



Delete template

Deletes the selected template in the template list.



Rename template

Changing the name of the saved template

Toolbar for operations with parameters



Move the card up

Moves the search parameter one position up.



Move the card down

Moves the search parameter one position down.



Add parameter

Adds a new search field.



Delete parameter

Removes the selected parameter from the list.



Remove all

Removes all parameters from the list.



Change parameter

Change search parameter values.

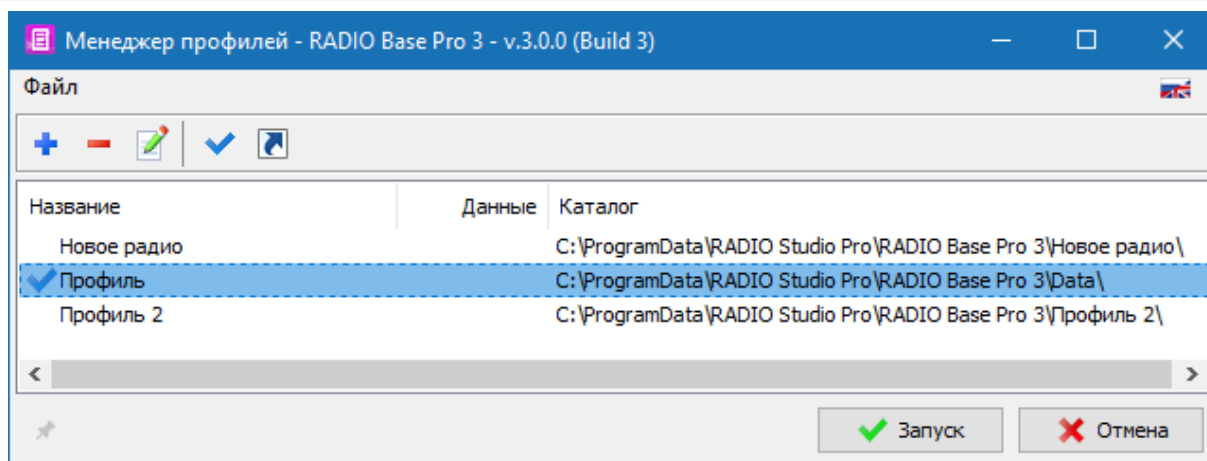
☒ Search only in the selected section

If this option is enabled, the search is performed only in the section selected in the list of sections in the database section, otherwise the search is performed on the entire database.

Search button

Starts the search procedure, the results of which are displayed in the "Search Results" window

Profile manager



Profile Manager is designed to create multiple profiles that allow you to run the program with a certain set of predefined parameters.

Each profile stores its data in the directory specified for the profile.

The launch of the profile manager is possible via the Start Menu - All Programs - RADIO Studio Pro - RADIO Base Pro - Profile Manager.



Create

Create a new profile.

The profile created with the "Default" parameter is used when the program is started without specifying the profile directory.



Remove

Delete profile directory.



Modify

Change the name and directory profile.



Use as main profile

Run the program with the selected main profile.



Create shortcut

Create a shortcut for the selected profile on the desktop.

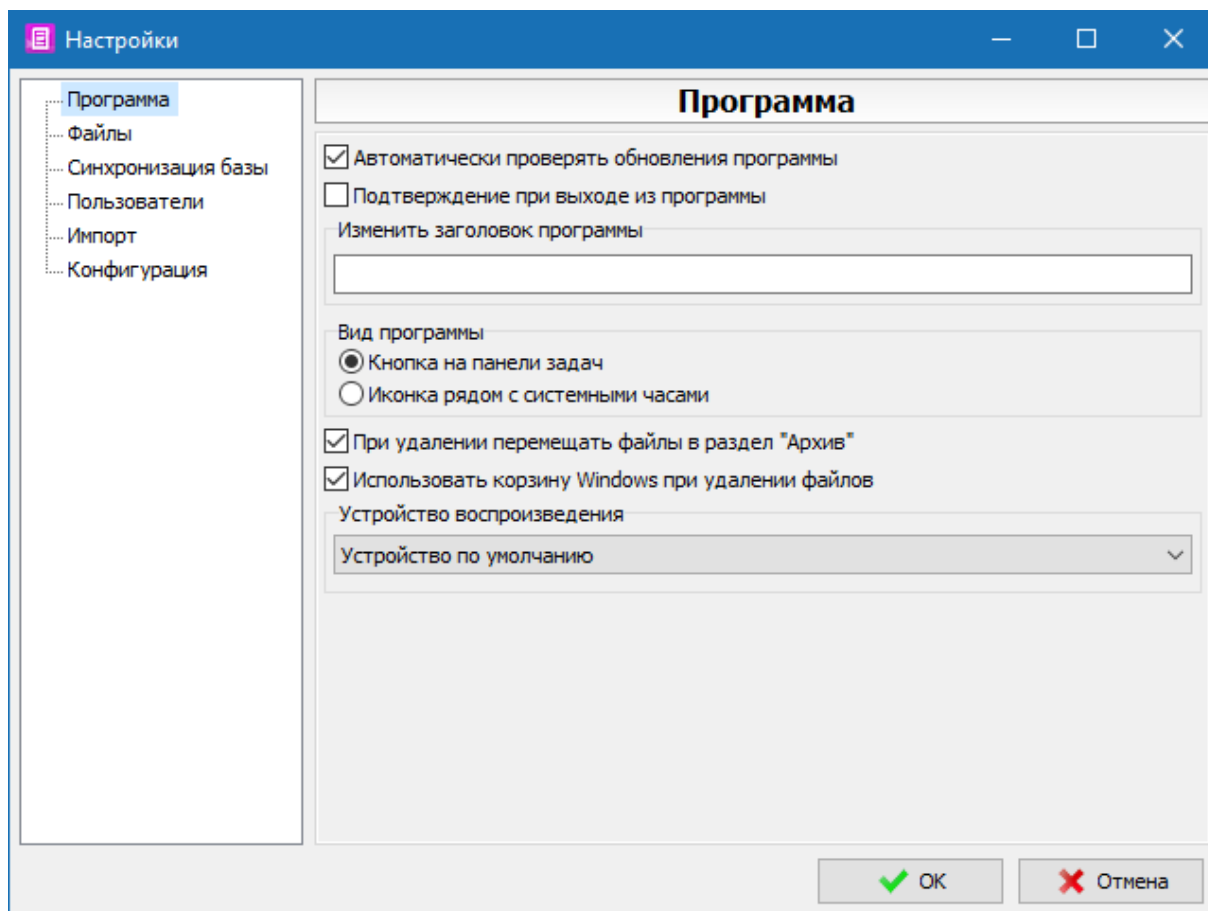
Allows you to make several shortcuts to run the program with the desired profile.

You can start the program with a specific profile manually with the parameter/Data = Profile_Dir.

Example: *Player.exe "/ Data = D:\Profile_Folder \"*

Settings

The settings window is intended to change the program settings.
For help on the section of interest to you, select it in the help section tree on the left.



Program

The panel is designed to change the basic settings of the program.

☒ **Automatically check for updates**

The program will automatically check for updates every day.

If after the last check for updates it takes more than a day, the check will be performed when the program starts.

☒ **Show confirmation on program exit**

When this option is enabled, a warning will be displayed when trying to close a program.

Abc

Change program title

The title of the program to display

View as

☒ **In the form of a button on the taskbar**

Settings

The program when minimizing the window will be minimized to a standard button.

☒ **As an icon next to the clock**

The program when minimizing the window will be minimized to the icon next to the clock.

☒ **Always delete files in the "Archive" section**

When deleting, the "Archive" section will be used.

☒ **Use recycle bin when deleting files**

On/Off use of the Windows Recycle Bin to delete files.

Play device

Used to play files.

Debug

The debugging mode is designed to obtain additional information on an error that has occurred for sending to the developer.

It is not recommended to enable debugging in normal operation mode.

If an error occurs, the program will offer to enable debugging in settings and an additional option if necessary.

☒ **Enable debugging**

On/Off display of debugging information in error windows.

☒ **Debug timers**

Enabling debugging for timer procedures

☒ **Debug threads**

Enabling debugging for procedures running on threads

☒ **Restore debugging options on application restart**

If the parameter is disabled, then after restarting the program the debugging mode will be turned off

Command line options

Three options are supported for launching an application with debugging enabled.

/Debug - Enable debugging

/DebugTimers - Enable debug timers.

/DebugThreads - Enable thread debugging.

Example: Application.exe /Debug

Play

abc ▼

Playback device

A device that is used to play files.

Volume

Sets the playback volume of files.

Users

All settings in this panel are available only if the user who has connected to the database is the administrator of RADIO Base Pro.

Other users can change only their own password.

Setting the user name when adding it to the database.



Add user

Add user to open database.



Delete user

Deleting a user from the database.



User properties

View and edit permissions for the user.

In the form that appears, you can assign access rights to the user.

Configuration



Backup archive folder

Specifies the location of the directory for saving zip data archives.

Options

☒ Autosave configuration archive on exit

On/Off autosave archive when exiting the program.

The archive is not saved if there were errors when loading the program.

☒ **Automatically backup on time**

On/Off autosave the archive at the specified time after the selected time interval.

The archive will be created only when the program is on, if the specified time has come.

12:34:56 - +

Backup time

Archive creation time.

123 - +

Interval in days

The interval in days after which a new copy of the archive will be created.

☒ **Use limited number of archives**

When this option is enabled, the program will automatically delete older archives when creating new ones.

123 - +

Maximum count

The maximum number of archive files, after which the program will begin to delete older archives.

☒ **No more than one archive per day**

When this option is enabled, the program will delete old archives on the same date when creating new ones.

Archive data

☒ **Settings**

Interface settings

☒ **Music database**

The contents of the database and directories

Actions

Save to archive

The procedure for saving the selected data in a zip archive.

Restore from archive

The procedure for restoring previously saved data from a zip archive.

Data reset

The procedure for resetting selected data to its default state.

Import configuration

Import music base RADIO Base Pro v.2.2.x

Importing data from a previous version of RADIO Base Pro v.2.2.x.

Import is made into the current open application database, in which **all data will be deleted**.

When importing, the database data from which the import is performed is saved.

Registration of the program

Registration of the program

RADIO Base Pro v.3 is free and does not require a license.

Contact Information

E-mail:

Technical support:

support@radiosoft.pro

Homepage on the Internet:

<https://radiosoft.pro>

